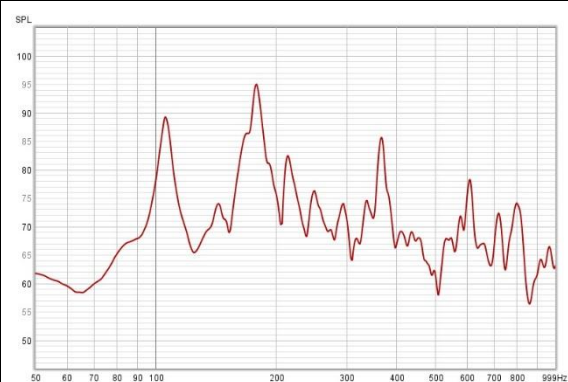


# OM1 orchestra model

MADE IN  
FRANCE



## Frequency response



Specifications	
Top	Sitka spruce
Back & Sides	Relicam ebony
Neck	FSC mahogany
Bridge	Crelicambony
Fingerboard	Crelicam ebony, 12" radius
Nut	Bone, 44mm
Saddle	Bone, drop-in
Neck Profile	SemiElliptical
Neck dimensions	21.5-24mm @ frets 1-9
Frets	Medium 18% nickel-silver
Tuners	Nickel Waverly (16:1 ratio)
Scale Length	648mm
Body Finish	High gloss nitro lacquer
Neck Finish	High gloss nitro laquer
Strings	D'Addario EJ-16 (.012"- .053")
Case	Deluxe hardshell case by TKL

Dimensions	
Body Length	492mm
Body Depth	105mm
Lower Bout Width	381mm
Total Length	1011mm

Parameters	
Monopole mobility	15.5
Equivalent mass	65 gr
Mode T(1,1)1	106 Hz
Mode T(1,1)2	180 Hz
Mode T(1,1)3	215 Hz